

# Building Partnerships for Long-Term Recovery

2021 Virginia Emergency Management Symposium | June 15, 2021



**FEMA**

# Presenters

---



**Wynne Kwan**

FEMA Region 3 Community Planning & Capacity Building (CPCB)  
Coordinator



**Kevin Snyder**

Federal Coordinating Officer (FCO)



**Elizabeth Otto**

FEMA Region 10 Community Planning & Capacity Building (CPCB)  
Coordinator



**FEMA**

# Central Themes for Discussion

- Overview of the National Disaster Recovery Framework (NDRF)
- FEMA R3 COVID-19 Interagency Recovery Coordination Task Force
- Recovery Issues/Challenges and Opportunities for Collaboration in Virginia
- Lessons Learned/Best Practices/Resources

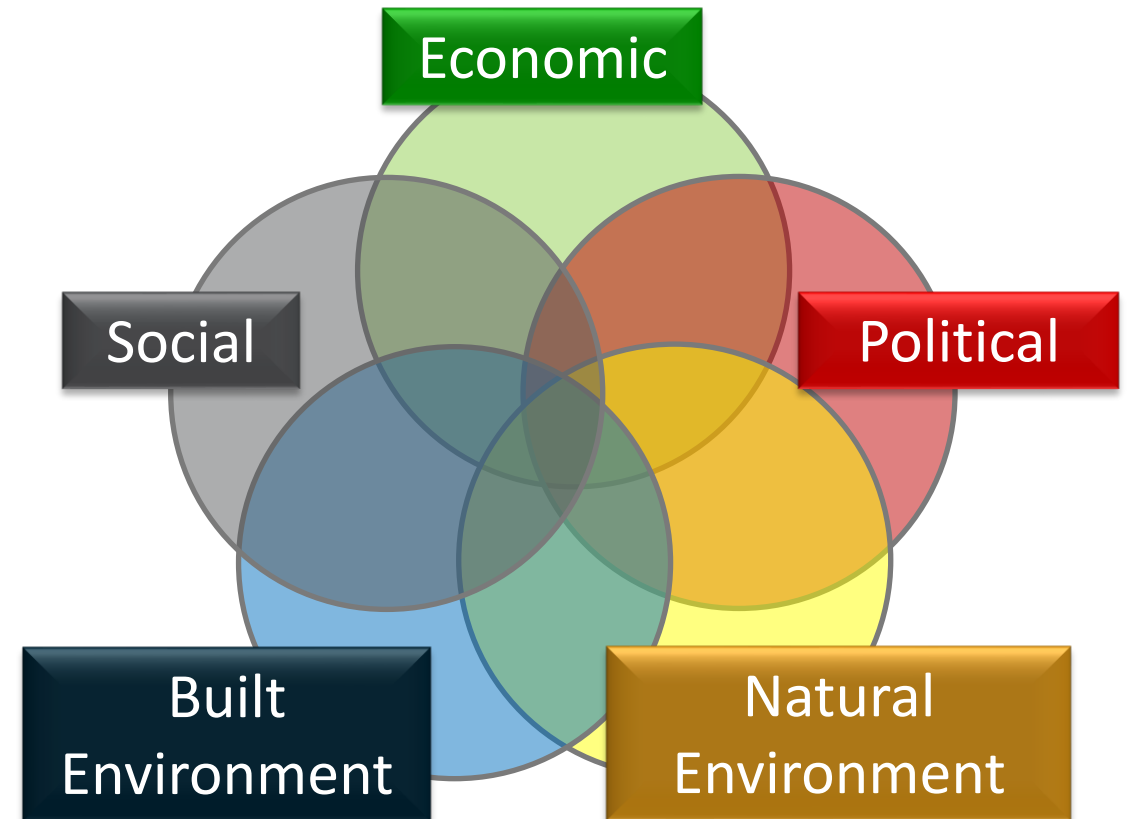
# Overview of the National Disaster Recovery Framework (NDRF)

# Recovery is Complex

---

Communities are networks of interconnected components.

Disturbance to one element means a disturbance to others.

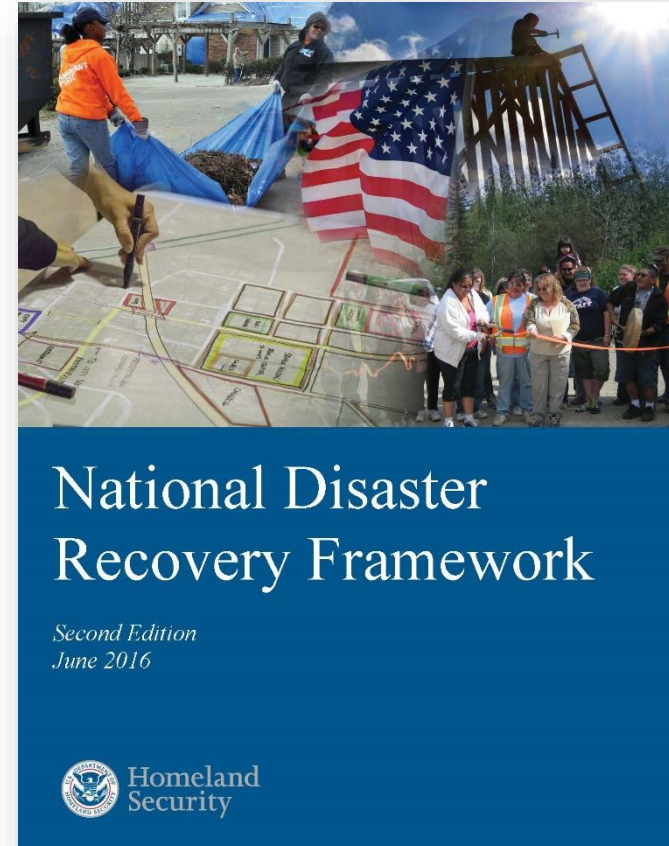


**FEMA**

# Complexity Requires Greater Coordination

A disaster that presents multiple challenges and issues requires a high level of coordination across recovery partners.

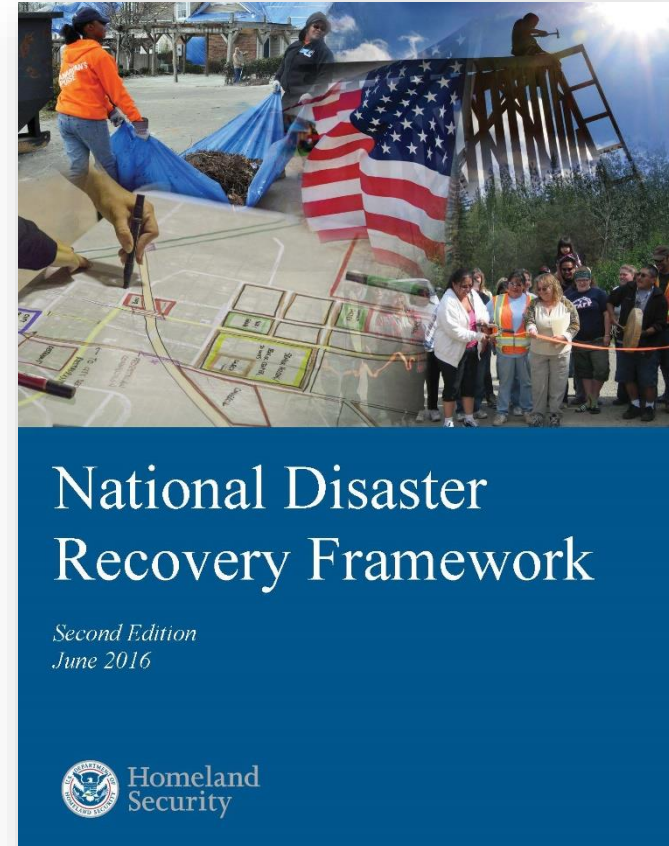
The National Disaster Recovery Framework (NDRF) provides guidance to help recovery managers coordinate efforts in a unified and collaborative manner.



**FEMA**

# National Disaster Recovery Framework

- Focuses on how best to **restore, redevelop, and revitalize** the health, social, physical, economic, natural, and environmental fabric of a community
- Promotes holistic recovery, sustainability, and resilience
- Is scalable, adaptable, and flexible
- Fosters whole community coordination and unified effort at every level
- Facilitates problem solving and leverages resources



# Multi-Sector Coordination Structure

---

Federal coordinating agencies lead national-level **Recovery Support Functions (RSFs)** that coordinate with state and local partners



**Community Planning and Capacity Building (CPCB)**  
DHS/FEMA



**Economic**  
Department of Commerce



**Health and Social Services (HSS)**  
Health and Human Services



**Housing**  
Housing & Urban Development



**Infrastructure Systems (IS)**  
US Army Corp of Engineers



**Natural and Cultural Resources (NCR)**  
Department of the Interior



**FEMA**



# Community Planning & Capacity Building RSF

---

**Goal:** More effective, efficient, and resilient recovery

**Who:** State, Local, Tribal, and Territorial Governments

Federal Departments/Agencies

Other Recovery Partners

**What:** Enable them to lead, manage, plan, and implement their recovery

**How:** Capacity Building

Planning technical assistance

State/Tribal programs that facilitate local recovery planning



**FEMA**

**FEMA R3 COVID-19**

**Interagency Recovery Coordination Task Force**

# COVID-19 – A Disaster Like No Other

---

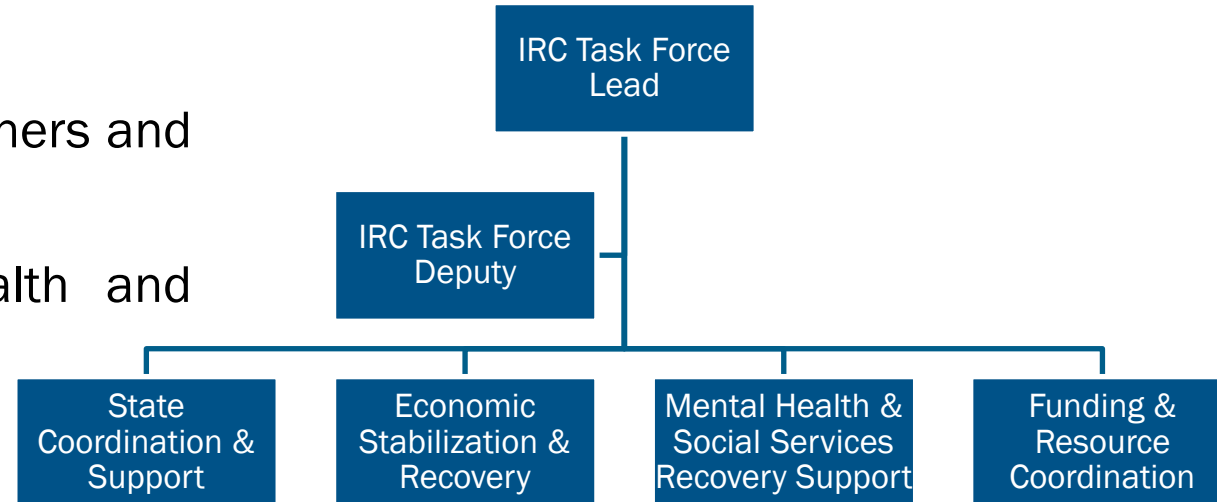
- Not business as usual!
- New models, new partnerships, new programs
- Affecting all 50 states, the District of Columbia, Territories, and Tribal Nations
- Complexity of available funding streams
- Uncertainty of how the pandemic would play out and the resultant impacts
- Anticipated that a high level of coordination amongst a diverse set of partners would be helpful in addressing the multitude of challenges and issues



**FEMA**

# R3 COVID-19 Interagency Recovery Coordination Task Force

- Established in late April 2020
- Led by FEMA Region 3, with support from the Federal interagency
- Lines of Effort:
  - Understand challenges faced by state partners and support their recovery priorities
  - Support resource needs in Mental Health and Social Services
  - Support states as they approach economic stabilization and recovery
  - Facilitate access to recovery funding and resources and identify where resource scarcity exists



**FEMA**

# Resources for Our Partners

- Bi-Weekly Newsletters
  - Highlighting efforts or topics of interest in each mission space
  - Listing of various resources, including funding opportunities, webinars, trainings, guidance, reports, etc.
- Weekly Resource Reports
  - Federal Programs
  - Philanthropic Programs
  - Resource Library Records
  - FEMA COVID-19 State and Local Program Allocation Tool
- Technical Assistance

**FEMA REGION III COVID-19 INTERAGENCY RECOVERY COORDINATION TASK FORCE BIWEEKLY NEWSLETTER**

**COVID-19 Interagency Recovery Coordination Task Force**

Greetings recovery partners! Hope everyone is staying well, safe, and healthy!

We're a little over six months into the COVID-19 pandemic, and 12 issues in with the COVID-19 Bi-Weekly newsletter. With the start of FY2021, this will be our last of the bi-weekly format, as we resume production of our quarterly newsletter, *Forward Recovery*. Look out for the next issue of *Forward Recovery* to be published on Oct. 30. It will continue to have information on COVID-19 recovery, but with an expanded scope to include other recovery-related items and resources, such as resilience planning, hazard mitigation, etc.

We're also thinking about sending out quick monthly updates on recovery events and resources between the quarterly newsletters, as we feel there are events, webinars, etc., that may be of interest to our partners, but may be missed due to the gap in between the quarterly newsletters. Let us know what you think.

As always, feel free to reach out to us at the Region 3 NDRF mailbox ([FEMA-R3-NDRF@fema.dhs.gov](mailto:FEMA-R3-NDRF@fema.dhs.gov)). Take care!

**Economic Stabilization & Recovery Working Group**

**Declining Participation by Women in the Workforce**

A recent [COVID-19 brief](#) released by McKinsey & Company raises concerns that COVID-19 has exacerbated existing gender disparities in the workplace. According to the data cited, women are being both laid off and furloughed at higher rates than men. Many women are also having to downshift their careers, taking a lower paying position with lessened responsibilities or part-time work, or having to leave the workforce altogether due to competing demands on their time, such as child care needs. Some estimates are that as many as 2 million women may leave the workforce as a result of COVID-19.

This trend could have a tremendously detrimental effect on efforts at reducing gender disparities, and negatively impact those gains that had previously been made. One suggestion is for companies to identify ways to better support the needs of their employees in order not to see such a reduction.



**FEMA**

# White Paper on Impact of COVID-19 on Social Safety Nets

- The vulnerability of social service providers came up in every meeting with state partners
- Safety nets were stretched far beyond their capacity – States worried about how lack of funding led to lack of capacity
- Demand for services within the human and social services sector grew dramatically even as revenue losses and staff layoffs threatened the safety net

[https://www.fema.gov/sites/default/files/2020-11/fema\\_covid-19-impact-human-social-services-sector\\_best-practice\\_11-16-20.pdf](https://www.fema.gov/sites/default/files/2020-11/fema_covid-19-impact-human-social-services-sector_best-practice_11-16-20.pdf)



## COVID-19's Impact on the Human & Social Services Sector

FEMA Region 3  
COVID-19 Interagency Recovery Coordination Task Force

November 13, 2020



# Recovery Issues/Challenges and Opportunities for Collaboration in Virginia

# Partner Outreach in Virginia

---

- Learn about issues/challenges, opportunities, projects, and planning efforts related to COVID-19 recovery
- Meetings with VA Health Equity Working Group, VA Economic Crisis Strike Force and VA Economic Development Partnership
- Outreach to non-governmental organizations
  - Resilient Virginia
  - Virginia Municipal League
  - Virginia Association of Planning District Commissions
  - Virginia Association of Counties
  - Virginia Tech Center for Economic and Community Engagement



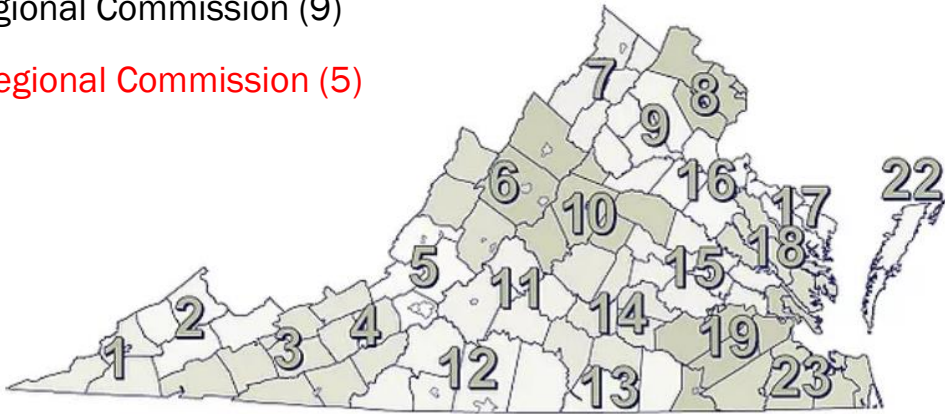
**FEMA**



# Partner Outreach in Virginia

- Conducted listening sessions with 18 of the 21 Planning District Commissions (PDCs)

- Accomack-Northampton PDC (22)
- Central Shenandoah PDC (6)
- Central Virginia PDC (11)
- Commonwealth Regional Commission (14)
- Crater PDC (19)
- Cumberland Plateau PDC (2)
- Hampton Roads PDC (23)
- Middle Peninsula PDC (18)
- Mount Rogers PDC (3)
- New River Valley Regional Commission (4)
- Northern Neck PDC (17)
- Northern Shenandoah Valley Regional Commission (7)
- Plan RVA (15)
- Rappahannock-Rapidan Regional Commission (9)
- Roanoke Valley-Alleghany Regional Commission (5)
- Southside PDC (13)
- Thomas Jefferson PDC (10)
- West Piedmont PDC (12)



(#) corresponds to location on the PDC map

\*PDCs in red text denote US Economic Development Administration-designated Economic Development Districts (EDDs)



**FEMA**

# Listening Session Discussion Questions/Topics

---

- Current recovery issues/challenges
- Anticipated recovery issues/challenges
- Future plans/efforts for COVID-19 recovery
- Awareness of state/regional recovery efforts
- Local recovery efforts underway
- COVID-19 recovery planning or management support needs
- Relevant surveys or data on community impacts and recovery topics
- Networking/coordination efforts between local/regional governments



# Identified Issues/Challenges

---

- Workforce and Economic Development
- Equity and Health
- Infrastructure
- Vaccine Distribution
- Education
- Local/regional government operations and communications
- Meeting fatigue



# PDC Collaborative Efforts

---

- Facilitating conversations between municipalities to determine needs, gaps, and priorities, coordinate on strategies, and share resources, best practices, etc.
- Leveraging hazard mitigation planning process and stakeholders as a forum for collaborating and coordinating
- Organizing Regional Coalitions to address specific topics, i.e., economic development, health care, etc.
- Producing/distributing newsletters
- Creating partnerships and programs connecting businesses with a need to those that can deliver
- Expanding services/capacity through public/private partnerships



**Lessons Learned/Best Practices/Resources**

# Lessons Learned

---

- NEW strategies were needed to mitigate the social and economic impacts of COVID-19 – need to work with NEW stakeholders in a different kind of Whole Community effort
- Data is KEY – Access to current data to understand current conditions and anticipate potential/evolving challenges/issues and make science/data-based decisions
- Meeting fatigue is REAL – LTR efforts need to balance the need for collaboration and coordination with meeting fatigue – best to integrate as much as possible
- Local/regional governments are innovative in the face of adversity – their successes need to be highlighted/celebrated
- PDCs serve as important convening role during the COVID-19 response and recovery!



# Best Practices

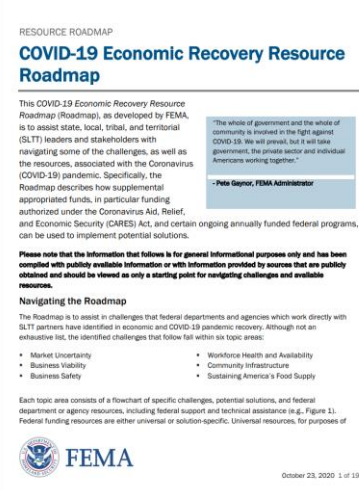
---

- Private/public partnerships can be helpful in providing/expanding community services and capacity
- Existing planning processes and other initiatives can be leveraged to build partnerships for coordination and collaboration for response and recovery
- Pre-disaster partnership building is key to addressing recovery challenges in a more timely/efficient/effective manner
- Need for greater funding opportunities to include regional governments and non-profits in recovery and resiliency planning
- Peer-to-peer networking provides a forum to share best practices, information, and experiences



# Recovery Resources

- FEMA MAX-TRAX Disaster Resource Library
- FEMA Region 3 Resource Reports
- FEMA Region 3 Forward Recovery Newsletter
- [FEMA COVID-19 Resource Roadmaps](#)
- [Disaster Financial Management Guide](#)
- [Recovery through Federal-State-Local Partnership](#)
- [Census Data COVID-19 Data Hub](#)
- [FEMA/Argonne COVID-19 Impact Analyses](#)
- [CPCB Community Recovery Management Toolkit](#)





# Questions?



# FEMA

**Kevin Snyder**

Federal Coordinating Officer

[kevin.snyder@fema.dhs.gov](mailto:kevin.snyder@fema.dhs.gov)

**Wynne Kwan**

FEMA Region 3 Community Planning & Capacity Building Coordinator

[wynne.kwan@fema.dhs.gov](mailto:wynne.kwan@fema.dhs.gov)

**Elizabeth Otto**

FEMA Region 10 Community Planning & Capacity Building Coordinator

[elizabeth.otto@fema.dhs.gov](mailto:elizabeth.otto@fema.dhs.gov)



**FEMA**

# Thank You!



# FEMA